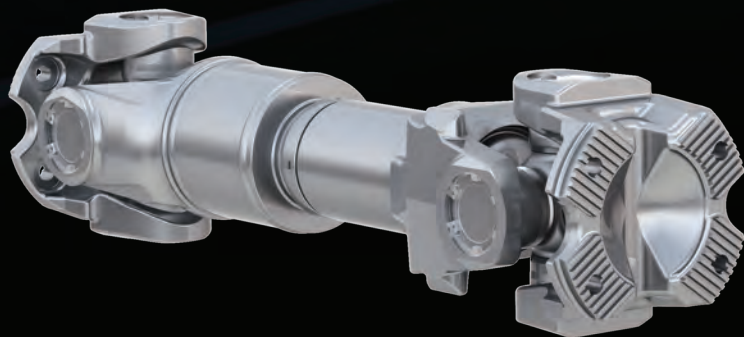


# Heavy-duty vocational drivelines



*Permalube RPL25*



*Permalube RPL35*

Permalube™ RPL Series Drivelines  
for vocational applications

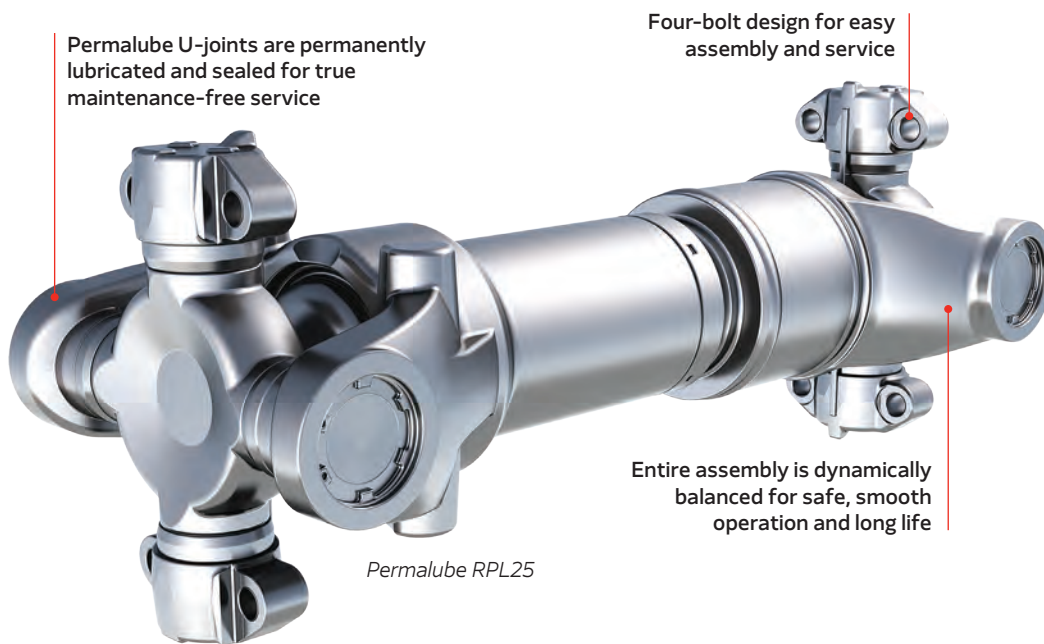


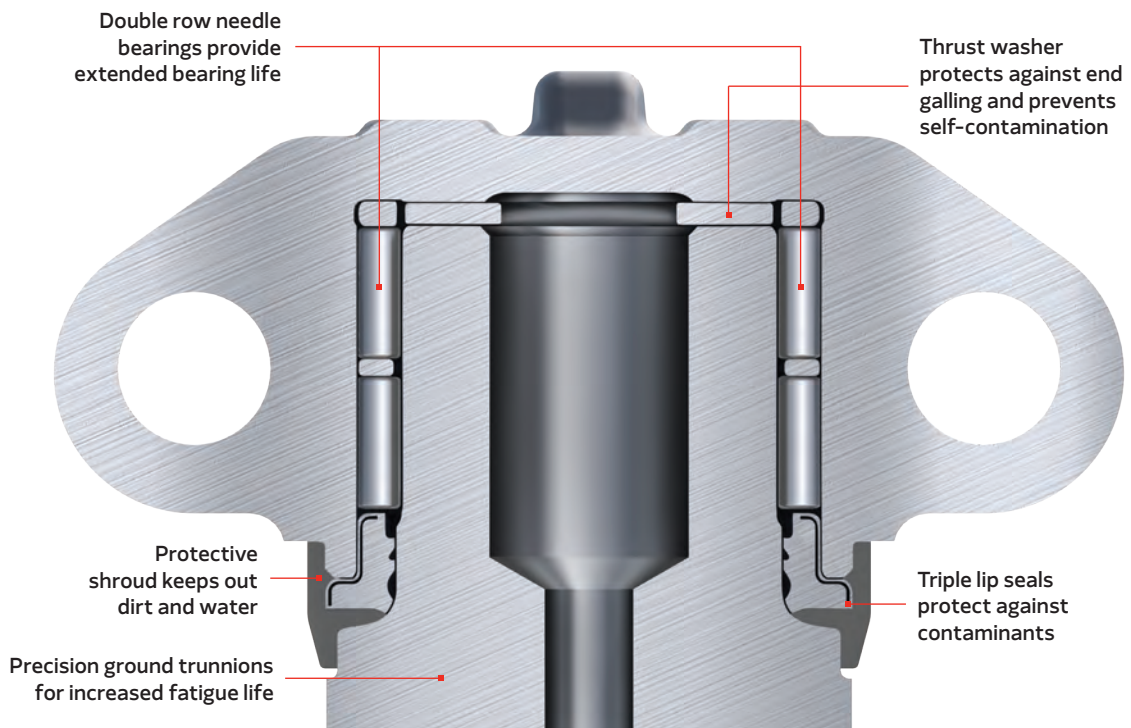
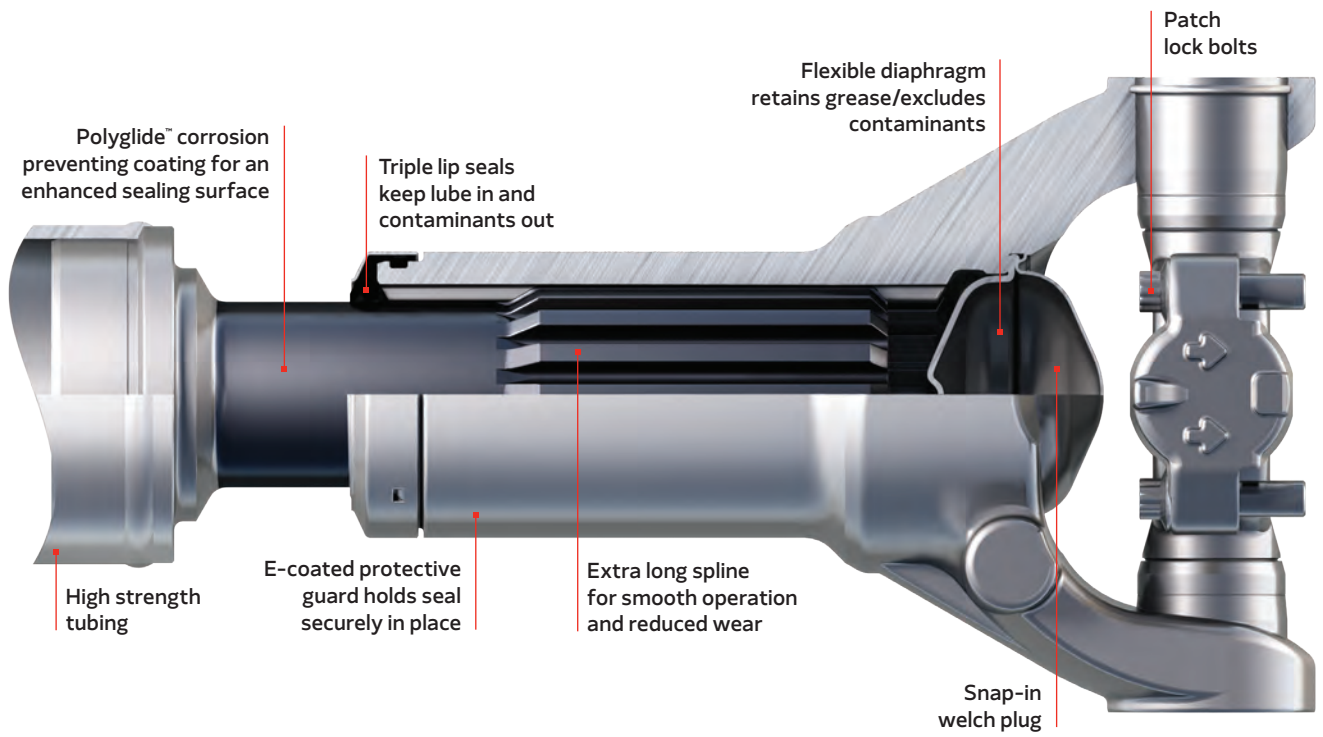
## More than a standard driveline

Meritor® Permalube™ RPL Series Drivelines were the first in the North American heavy-duty commercial vehicle industry to be permanently lubricated and sealed for life. The advantage? Reduced operating and maintenance costs, industry leading warranties, easy serviceability and extended U-joint life, particularly on gear-fast/run-slow drivetrains and higher torque applications. Designed to accommodate linehaul, heavy service and downspeeding, the drivelines fit a wide range of applications and torque handling requirements.

## Features and benefits

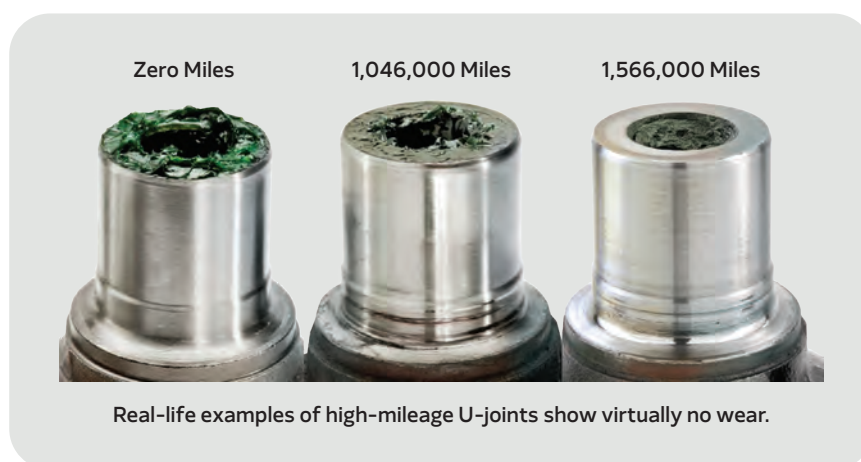
- Developed for severe duty applications where maintenance is irregular, conditions are extreme and standard product life is adversely effected
- Combined with Permalube U-joints, this critical drivetrain component is reliable, cost effective and maintenance-free
- Can be used in place of standard drivelines where 92N or 18MXL are used
- High-torque-rated models available for demanding applications, including heavy service and downspeeding, with a 3-year/350,000-mile parts, 1-year/unlimited-mile labor warranty included
- E-coated steel guard secures and protects the slip seal against contaminants and damage
- Four-bolt design for easy installation and service
- Extended U-joint life:
  - Triple lip seals provide the ultimate protection against contaminants
  - Nylon thrust washers eliminate metal-to-metal contact, preventing wear
- Self-aligning center bearing is standard
- Environmentally “green” because the need to grease the driveline is eliminated
- Partner with a leader – we’ve been the industry’s technology leader in drivetrain solutions for more than 20 years





# Permalube™ RPL Series Driveline specifications

Specifications	RPL20	RPL25	RPL25SD	High-torque rated	
				RPL35	RPL35SD
Tube size	4.1 in x 0.18 in	4.59 in x 0.18 in	4.69 in x 0.23 in	4.69 in x 0.23 in	5.2 in x 0.24 in
Tubing internal diameter	3.74 in	4.23 in	4.23 in	4.23 in	4.73 in
Swing diameter	7.8 in	9.1 in	9.1 in	8.11 in	8.11 in
Driveline rating	12,000 lb-ft (16,270 n-m)	17,200 lb-ft (23,320 n-m)	18,500 lb-ft (25,083 n-m)	21,500 lb-ft (29,150 n-m)	25,820 lb-ft (35,000 n-m)
Application	Main and inter-axle	Main and inter-axle	Main	Main	Main



## Driveline warranty coverage

The driveline warranty for linehaul applications is 5 years/500,000 miles parts with 1 year/unlimited miles labor included. The warranty for heavy service is 3 years/350,000 miles parts with 1 year/unlimited miles labor included.

Every warranty claim is fully supported by OnTrac™. Call **866-668-7221 (OnTrac1)** or visit Support → CDBS Customer Support on [cummins.com](http://cummins.com) For details, download the Commercial Vehicle Systems Warranty brochure (SP-95155) from [cummins.com/drivetrain-systems/lod](http://cummins.com/drivetrain-systems/lod).

## Backed by DriveForce™

Every Meritor® RPL Series Driveline is backed by unsurpassed service and support with DriveForce – our North American field sales and service organization. DriveForce supports our products cradle to grave with a combination of sales, service and aftermarket representatives. For more information or to find your DriveForce representative, call **866-668-7221 (OnTrac1)** or visit Support → CDBS Customer Support on [cummins.com](http://cummins.com).



Cummins Inc.  
Box 3005  
Columbus, IN 47202-3005  
U.S.A.

[cummins.com](http://cummins.com)

Product models, brands, names and trademarks depicted herein are the property of their respective owners and, except where otherwise indicated, are not in any way associated with Cummins Inc., Meritor, Inc. or any parent or affiliate, thereof.

SP-18113  
Bulletin 6496741 Produced in U.S.A. Rev. 9/24  
©2024 Meritor, Inc.