



KTA19

Marine Propulsion and Auxiliary Engines for Commercial and Recreational Applications

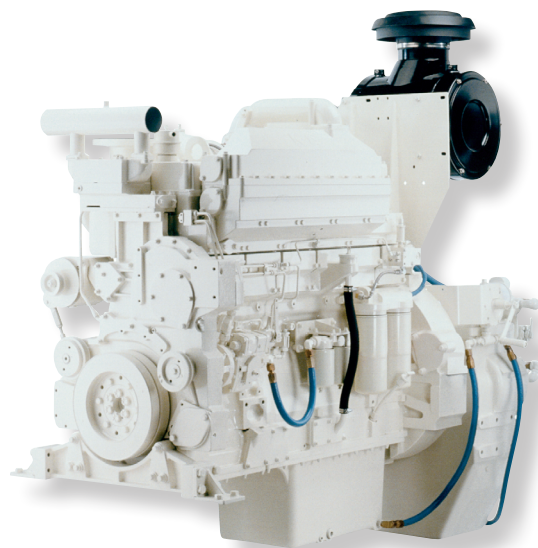
General Specifications

Configuration	In-line, 6-cylinder, 4-stroke diesel
Aspiration	Turbocharged / Aftercooled
Displacement	19 L (1150 in ³)
Bore & Stroke	159 X 159 mm (6.25 X 6.25 in)
Rotation	Counterclockwise facing flywheel
Fuel System	Pressure Time (PT)

Product Dimensions and Weight

Overall Length	mm (in)	1877	(74)
Length of Block	mm (in)	1200	(47)
Overall Width	mm (in)	1003	(40)
Overall Height	mm (in)	1905	(75)
Weight	kg (lb)	2073	(4570)

Dimensions and weight may vary based on selected engine configuration.



Power Ratings

Engine Model	Output Power			Engine Speed RPM	Rating Definition	Fuel Consumption		Emissions				
	kW	MHP	BHP			Rated Speed L/hr (gal/hr)	ISO* L/hr (gal/hr)	IMO	EPA	EU	RCD	
Variable Speed												
KTA19-M3	373	507	500	1800	Continuous	96.0 (25.4)	66.4 (17.5)	2	-	-	-	
KTA19-M3	395	537	530	1800	Continuous	98.2 (25.9)	70.7 (18.7)	1	-	-	-	
KTA19-M3	447	608	600	1800	Continuous	111.1 (29.4)	79.8 (21.1)	1	-	-	-	
KTA19-M3	447	608	600	1800	Continuous	116.9 (30.9)	82.6 (21.8)	2	-	-	-	
KTA19-M3	477	649	640	1800	Heavy Duty	119.9 (31.7)	84.1 (22.2)	1	-	-	-	
KTA19-M4	522	710	700	2100	Heavy Duty	136.5 (36.0)	91.7 (24.3)	1	-	-	-	
Fixed Speed												
KTA19-D(M)	336	456	450	1500 (50 Hz)	Prime	82.5 (21.8)	44.8 (11.8)	-	-	-	-	
KTA19-D(M1)	358	487	480	1500 (50 Hz)	Prime	91.2 (24.1)	47.1 (12.5)	2	-	-	-	
KTA19-D(M)	392	532	525	1800 (60 Hz)	Prime	98.4 (26.0)	53.6 (14.2)	-	-	-	-	
KTA19-D(M)	403	548	540	1500 (50 Hz)	Prime	96.5 (25.5)	49.5 (13.1)	1	-	-	-	
KTA19-D(M1)	410	558	550	1500 (50 Hz)	Prime	102.6 (27.1)	52.5 (13.9)	2	-	-	-	
KTA19-D(M1)	425	578	570	1800 (60 Hz)	Prime	106.4 (28.1)	58.8 (15.5)	2	-	-	-	
KTA19-D(M)	447	608	600	1500 (50 Hz)	Prime	107.5 (28.4)	54.2 (14.3)	-	-	-	-	
KTA19-D(M)	462	629	620	1800 (60 Hz)	Prime	110.9 (29.3)	59.3 (15.7)	1	-	-	-	
KTA19-D(M1)	485	659	650	1800 (60 Hz)	Prime	120.8 (31.9)	64.7 (17.1)	2	-	-	-	
KTA19-D(M)	507	690	680	1800 (60 Hz)	Prime	122.3 (32.3)	62.5 (16.5)	-	-	-	-	

* Average fuel consumption based on ISO 8178 E3 Standard Test Cycle (variable speed models) and ISO 8178 D2 Standard Test Cycle (fixed speed models)

KTA19

Marine Propulsion and Auxiliary Engines for Commercial and Recreational Applications

Features and Benefits

Engine Design – Rugged in-line six cylinder designed for heavy duty applications. Replaceable wet cylinder liners offer longer life and lower rebuild cost. Individual, four valve design cylinder heads for improved economy and performance. Gallery cooled pistons for maximum durability

Fuel System – Dependable Cummins PT fuel system can be operated mechanically or with CENTRY electronics for precise engine fueling. Step Timing Control (STC) allows for smooth engine acceleration under load. Premium fuel injectors utilize ceramic components for increased durability

Cooling System – Keel cooled or engine mounted heat exchanger system available. Spin-on Cummins water treatment filters for protection against cooling system corrosion

Exhaust System – Water cooled exhaust manifold reduces emissions and cools engine surface temperature

Air System – Top mounted Cummins turbocharger with vertical or horizontal elbow, optimized for marine applications. Marine grade air cleaner with air inlet restriction indicator. Low temperature aftercooler available on the KTA19-M4 for increased efficiency. Cast iron water cooled exhaust manifold

Lubrication System – Marine grade steel or cast aluminum lube oil pan (72 L [19 gal]). Cummins spin-on oil filters available handed for simplified service

Electronics – 24v standard electrical system with 12V option available.

Certifications – Complies with either IMO Tier 1, IMO Tier 2 or EU Stage IIIa emissions regulations as indicated. Certificates of compliance are available from the U.S. EPA and Lloyd's Register of Shipping. Consult your local Cummins professional for a complete listing of current marine agency approvals for this engine

Optional Equipment

- Direct mounted front power take-off
- Duplex lube and fuel filtration
- Engine room and pilot house panel with analog gauges
- SAE A and B accessory drives
- Integral marine gear oil cooler



Cummins Inc.
4500 Leeds Avenue – Suite 301
Charleston, SC 29405-8539
U.S.A.

Phone: 1-800-CUMMINS™ (1-800-286-6467)
Internet: marine.cummins.com

[Twitter.com/CumminsEngines](https://twitter.com/CumminsEngines)
[YouTube.com/CumminsEngines](https://www.youtube.com/CumminsEngines)

Bulletin 4087449 Printed in U.S.A. Rev. 1/17
©2017 Cummins Inc.