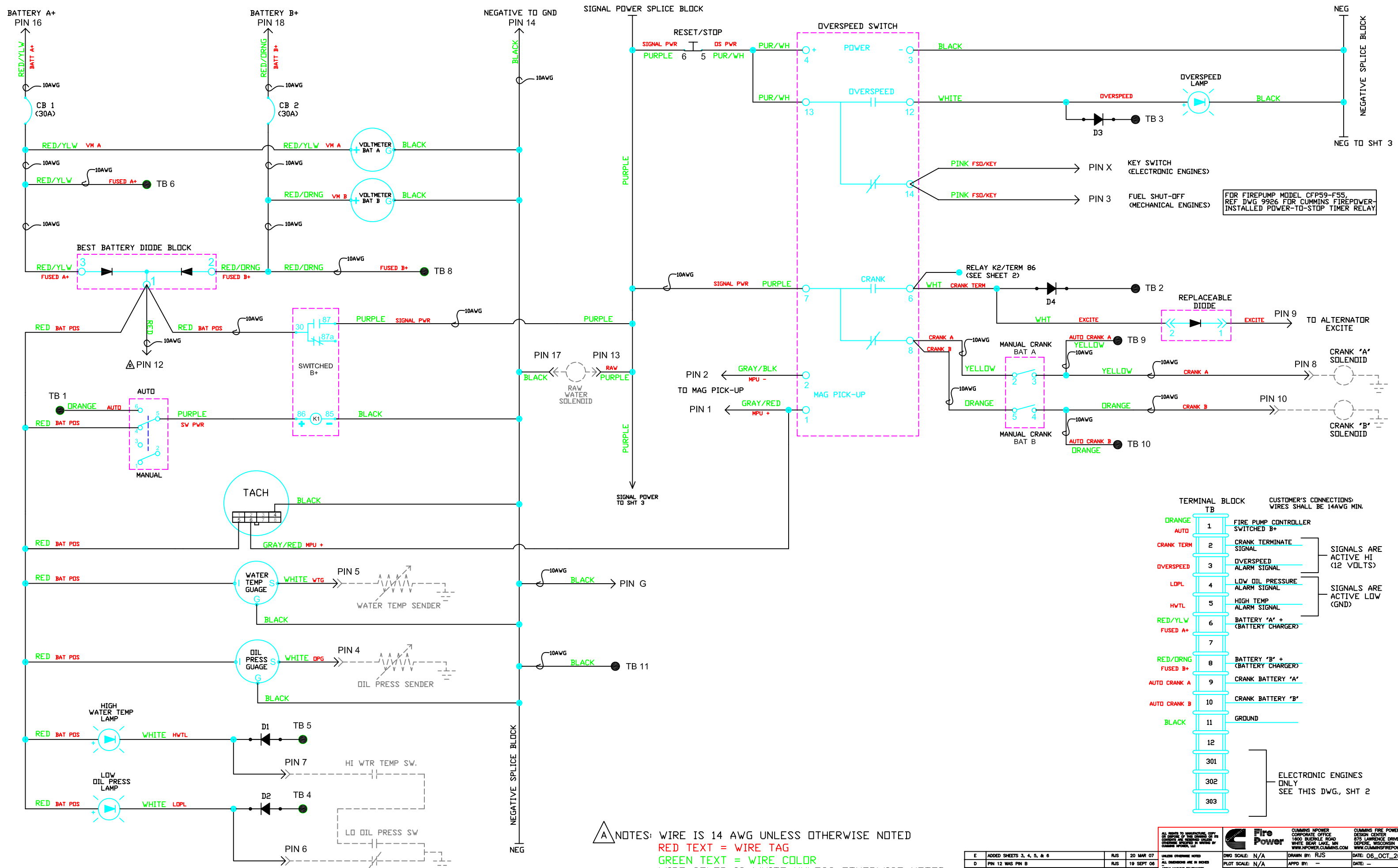


Before 16 April 2010



FOR FIREPUMP MODEL CFP59-F55,
REF DWG 9926 FOR CUMMINS FIREPOWER-
INSTALLED POWER-TO-STOP TIMER RELAY

| TERMINAL BLOCK TB | CUSTOMER'S CONNECTIONS Wires shall be 14AWG MIN. |
|----------------------|--|
| ORANGE AUTO | 1 FIRE PUMP CONTROLLER SWITCHED B+ |
| CRANK TERM | 2 CRANK TERMINATE SIGNAL |
| OVERSPEED | 3 OVERSPEED ALARM SIGNAL |
| LOPL | 4 LOW OIL PRESSURE ALARM SIGNAL |
| HVTL | 5 HIGH TEMP ALARM SIGNAL |
| RED/YLW FUSED A+ | 6 BATTERY 'A' + (BATTERY CHARGER) |
| 7 | |
| RED/DRNG FUSED B+ | 8 BATTERY 'B' + (BATTERY CHARGER) |
| AUTO CRANK A | 9 CRANK BATTERY 'A' |
| AUTO CRANK B | 10 CRANK BATTERY 'B' |
| BLACK | 11 GROUND |
| 301 | |
| 302 | |
| 303 | |

SIGNALS ARE ACTIVE HI (12 VOLTS)
SIGNALS ARE ACTIVE LOW (GND)

ELECTRONIC ENGINES ONLY
SEE THIS DWG., SHT 2

NOTES: WIRE IS 14 AWG UNLESS OTHERWISE NOTED
 RED TEXT = WIRE TAG
 GREEN TEXT = WIRE COLOR
 WIRE COLOR IS WHITE UNLESS OTHERWISE NOTED
 D1 - D4: 6 Amp/400 Vpiv

| REV | DESCRIPTION OF REVISION | BY | DATE |
|-----|--|-----|------------|
| E | ADDED SHEETS 3, 4, 5, & 6 | RJS | 20 MAR 07 |
| D | PIN 12 WAS PIN 8 | RJS | 19 SEPT 06 |
| C | REMOVED 5 AMP CIRCUIT BREAKER | RJS | 27 JUNE 06 |
| B | ADDED CONNECTION TO TERM 6 OF SPEED SWITCH | RJS | 17 DEC 05 |
| A | CHANGED WIRE GAUGES; CHG'D TB 1 LABELS | RJS | 27OCT05 |

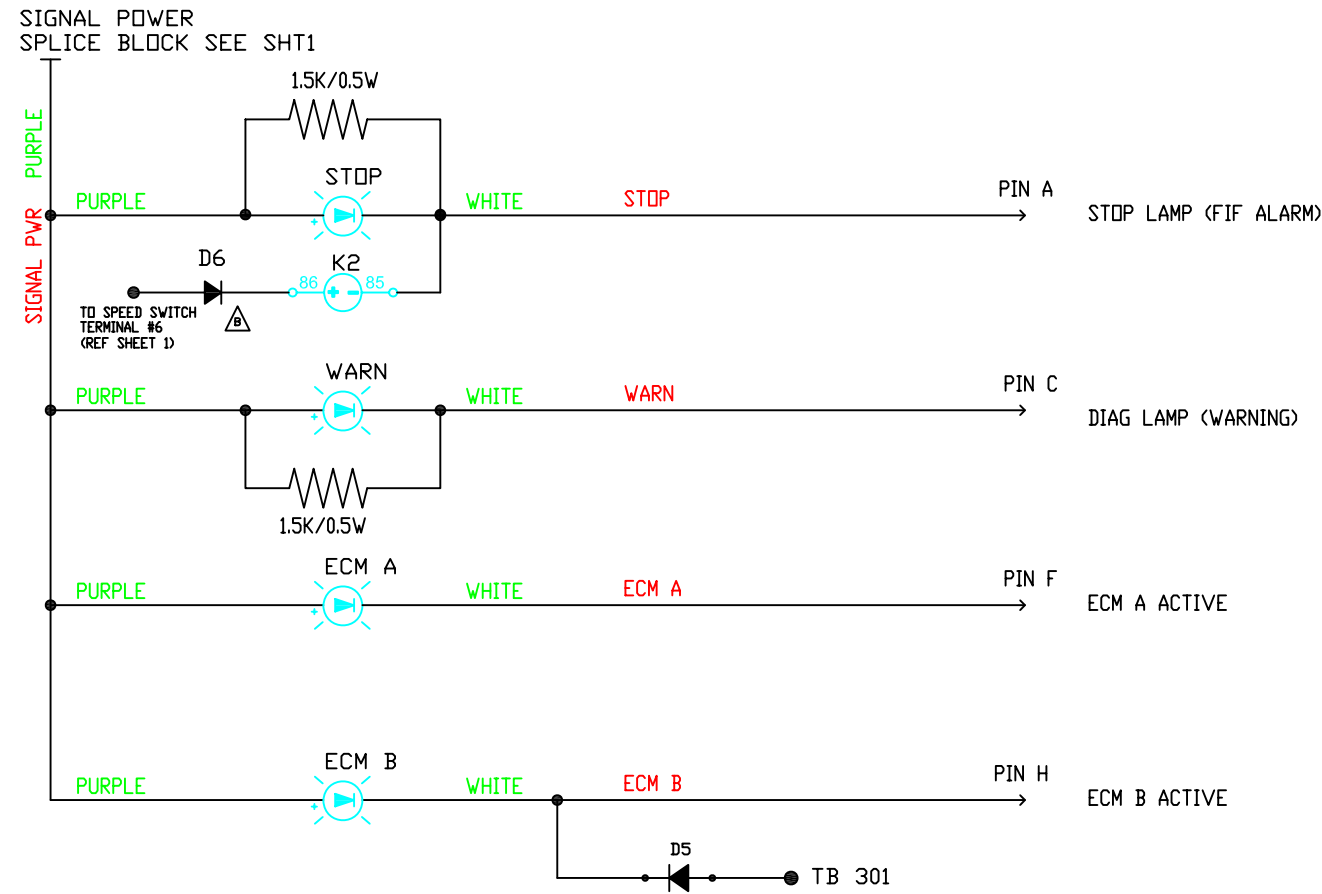
ALL RIGHTS TO MANUFACTURE, COPY OR REPRODUCE THIS DRAWING OR ITS CONTENTS ARE RESERVED BY CUMMINS INCORPORATED. CUMMINS INCORPORATED IS THE REGISTERED TRADEMARK OF CUMMINS INCORPORATED.

Fire Power
 CUMMINS FIRE POWER CORPORATION
 1800 BURELLE ROAD
 WHITE BEAR LAKE, MN
 WWW.FIREPOWER.CUMMINS.COM

CUMMINS FIRE POWER DESIGN CENTER
 875 LAWRENCE DRIVE
 DEPERE, WISCONSIN
 WWW.CUMMINSFIREPOWER.COM

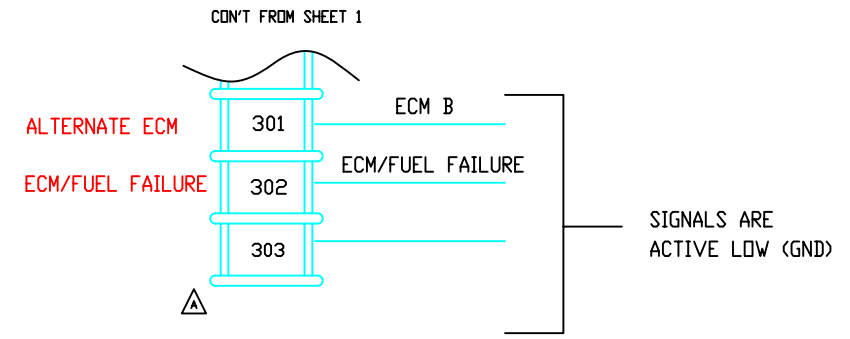
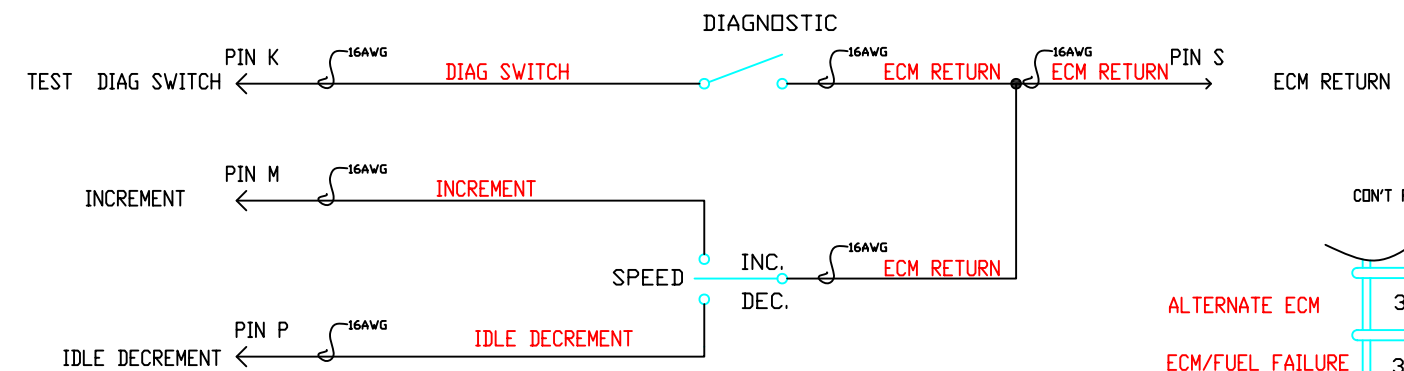
DWG SCALE: N/A
 PLOT SCALE: N/A
 DESCRIPTION: SCHEMATIC, CONTROL PANEL
 REFERENCE: FIREPUMP
 DATE: 06_OCT_2005
 APPD BY: RJS
 DATE: --
 DRAWING NUMBER: 10423E_SHT1

ADDITIONAL CIRCUITS FOR ELECTRONIC ENGINES

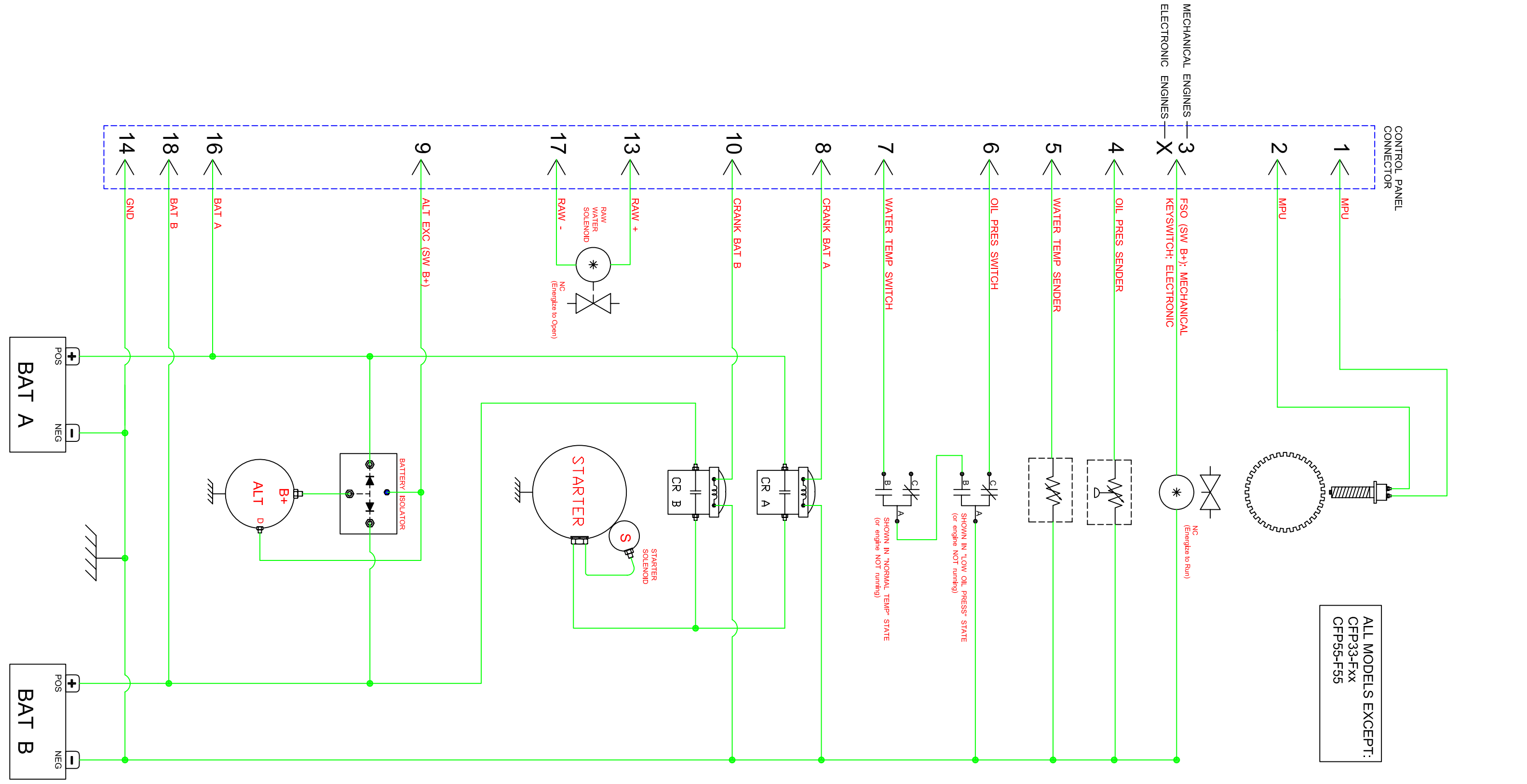


LEGEND:
 K2 ECM/FUEL FAIL RELAY
 R RESISTOR

NOTES: WIRE IS 14AWG UNLESS OTHERWISE NOTED
 RED TEXT = WIRE TAG
 GREEN TEXT = WIRE COLOR
 WIRE COLOR IS WHITE UNLESS OTHERWISE NOTED
 RESISTOR VALUE = 15Kohms, 1/2W
 MINIMUM DIODE RATING: 6A/400V



| | | | | | |
|---|---------------------------|--|------------|--|-------------------|
| ALL RIGHTS TO MANUFACTURE, COPY, OR REPRODUCE THIS DRAWING OR ITS CONTENTS ARE RESERVED UNLESS OTHERWISE SPECIFIED BY WRITING BY CLUMMINS NPOWER, LLC | | CLUMMINS NPOWER CORPORATE OFFICE 1800 BIERKLE ROAD WHITE BEAR LAKE, MN WWW.NPOWER.CLUMMINS.COM | | CLUMMINS FIRE POWER DESIGN CENTER 875 LAWRENCE DRIVE DEPERE, WISCONSIN WWW.CLUMMINSFIREPOWER.COM | |
| E | ADDED SHEETS 3, 4, 5, & 6 | RJS | 20 MAR 07 | UNLESS OTHERWISE NOTED ALL DIMENSIONS ARE IN INCHES | DWG SCALE: N/A |
| D | SEE SHT 1 FOR REV CHANGE | RJS | 19 SEPT 06 | APPLY MACHINING TOLERANCES 3X = 0.008 2X = 0.012 1X = 0.015 | PLOT SCALE: N/A |
| C | REDRAW | RJS | 3 JULY 06 | APPLY MACHINING TOLERANCES 3X = 0.008 2X = 0.012 1X = 0.015 | DRW BY: RJS |
| B | CHG'D WIRING OF K2 | RJS | 17 DEC 05 | APPLY MACHINING TOLERANCES 3X = 0.008 2X = 0.012 1X = 0.015 | APPD BY: -- |
| A | REF PAGE 1 REV NOTES | RJS | 27 OCT 05 | | DATE: 06_OCT_2005 |
| REV | DESCRIPTION OF REVISION | BY | DATE | | |



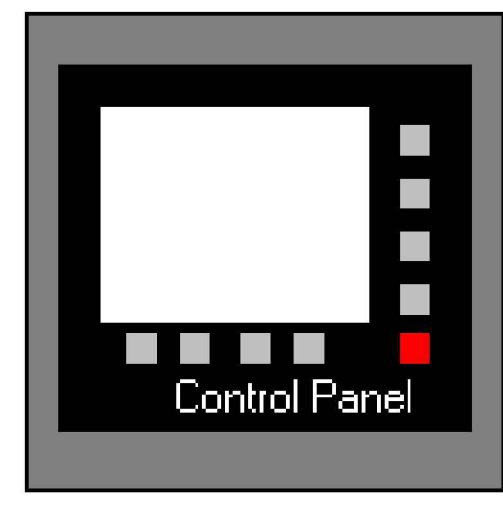
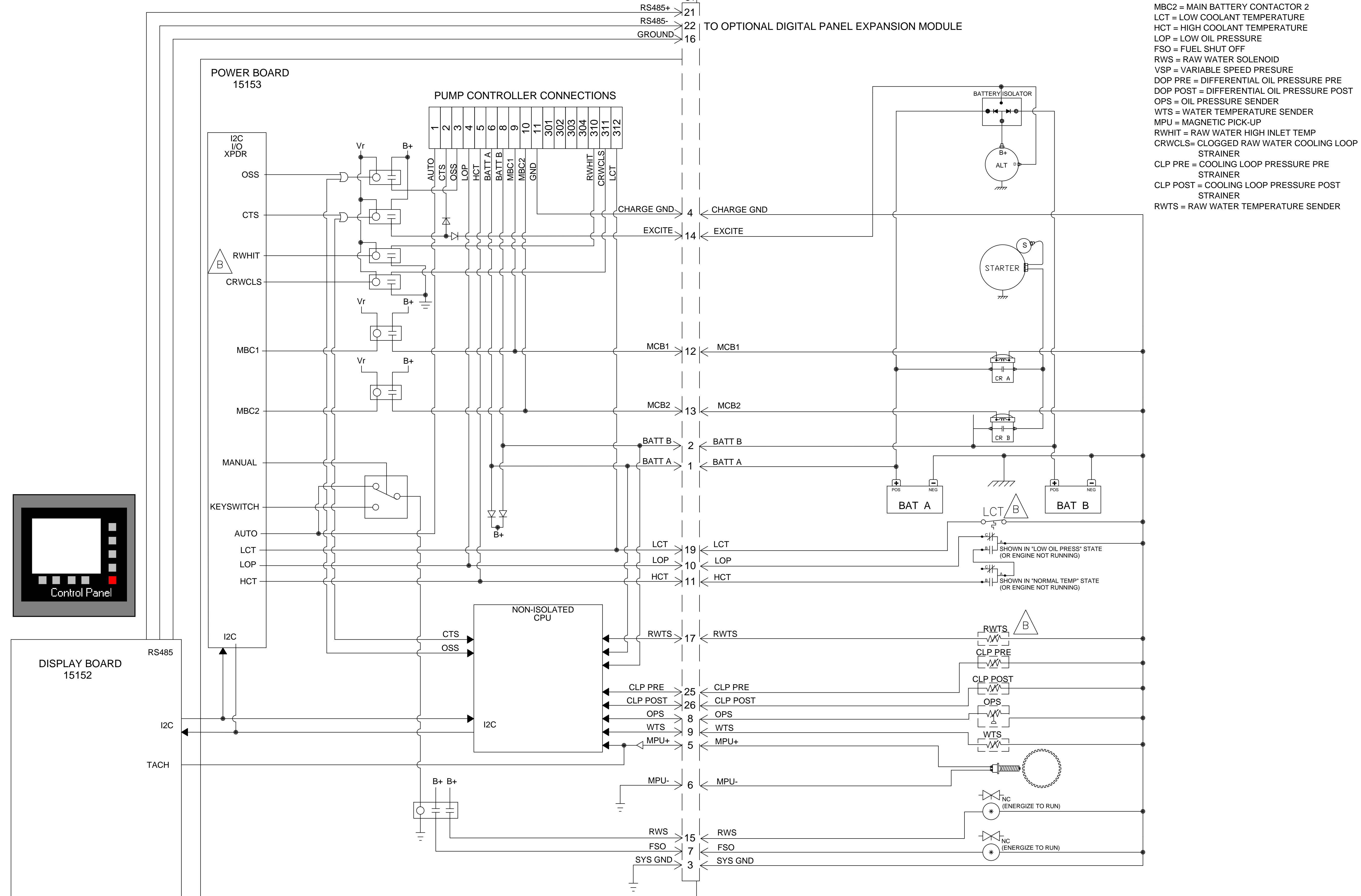
ALL MODELS EXCEPT:
CFP33-Fxx
CFP55-F55

| | | | | | | | | | | | | | | | | | | | | | | | | | | | | | | | | | | | | | | | | | | | | | | | | | | | | | | | |
|--|------------------------------|--|------------|--|-------------|--------------------------|-----|------------|---|--------|-----|-----------|---|--------------------|-----|-----------|---|----------------------|-----|-----------|-----|-------------------------|----|------|---|------------------------|------------------------------|----------------------------|------------------|-----------------|-----------------|-----------------|-----------------|---------------|---------------|---|------------|-----|-----------|-----|-------|-------------|-------------|-----|----------|-----|-------|-----|---|--------------|------------------|------------|----------|-----------------|-------------|
| <small>ALL RIGHTS TO MANUFACTURE, COPY OR REPRODUCE THIS DRAWING OR ITS CONTENTS OR ANY PART THEREOF ARE RESERVED BY CLUMMINS FIREPOWER, LLC</small> | | Fire Power <small>CLUMMINS FIREPOWER CORPORATION OFFICE 1800 BIERKLE ROAD WHITE BEAR LAKE, MN WWW.FIREPOWER.COM</small> | | <small>CLUMMINS FIRE POWER DESIGN CENTER 875 LAWRENCE DRIVE DEPERE, WISCONSIN WWW.CLUMMINSFIREPOWER.COM</small> | | | | | | | | | | | | | | | | | | | | | | | | | | | | | | | | | | | | | | | | | | | | | | | | | | | |
| <table border="1"> <tr><td>E</td><td>ADDED SHEETS 3, 4, 5, & 6</td><td>RJS</td><td>20 MAR 07</td></tr> <tr><td>D</td><td>SEE SHT 1 FOR REV CHANGE</td><td>RJS</td><td>19 SEPT 06</td></tr> <tr><td>C</td><td>REDREW</td><td>RJS</td><td>3 JULY 06</td></tr> <tr><td>B</td><td>CHG'D WIRING OF K2</td><td>RJS</td><td>17 DEC 05</td></tr> <tr><td>A</td><td>REF PAGE 1 REV NOTES</td><td>RJS</td><td>27 OCT 05</td></tr> <tr><td>REV</td><td>DESCRIPTION OF REVISION</td><td>BY</td><td>DATE</td></tr> </table> | E | ADDED SHEETS 3, 4, 5, & 6 | RJS | 20 MAR 07 | D | SEE SHT 1 FOR REV CHANGE | RJS | 19 SEPT 06 | C | REDREW | RJS | 3 JULY 06 | B | CHG'D WIRING OF K2 | RJS | 17 DEC 05 | A | REF PAGE 1 REV NOTES | RJS | 27 OCT 05 | REV | DESCRIPTION OF REVISION | BY | DATE | <table border="1"> <tr><td>UNLESS OTHERWISE NOTED</td><td>ALL DIMENSIONS ARE IN INCHES</td></tr> <tr><td>APPLY MACHINING TOLERANCES</td><td>3/16" = ± 0.010"</td></tr> <tr><td>1/4" = ± 0.015"</td><td>3/8" = ± 0.010"</td></tr> <tr><td>1/2" = ± 0.015"</td><td>3/4" = ± 0.010"</td></tr> <tr><td>1" = ± 0.015"</td><td>2" = ± 0.010"</td></tr> </table> | UNLESS OTHERWISE NOTED | ALL DIMENSIONS ARE IN INCHES | APPLY MACHINING TOLERANCES | 3/16" = ± 0.010" | 1/4" = ± 0.015" | 3/8" = ± 0.010" | 1/2" = ± 0.015" | 3/4" = ± 0.010" | 1" = ± 0.015" | 2" = ± 0.010" | <table border="1"> <tr><td>DWG SCALE:</td><td>N/A</td><td>DRAWN BY:</td><td>RJS</td><td>DATE:</td><td>06_OCT_2005</td></tr> <tr><td>PLOT SCALE:</td><td>N/A</td><td>APPD BY:</td><td>---</td><td>DATE:</td><td>---</td></tr> </table> | DWG SCALE: | N/A | DRAWN BY: | RJS | DATE: | 06_OCT_2005 | PLOT SCALE: | N/A | APPD BY: | --- | DATE: | --- | <table border="1"> <tr><td>DESCRIPTION:</td><td>ENGINE_SCHEMATIC</td></tr> <tr><td>REFERENCE:</td><td>FIREPUMP</td></tr> <tr><td>DRAWING NUMBER:</td><td>10423E_SHT3</td></tr> </table> | DESCRIPTION: | ENGINE_SCHEMATIC | REFERENCE: | FIREPUMP | DRAWING NUMBER: | 10423E_SHT3 |
| E | ADDED SHEETS 3, 4, 5, & 6 | RJS | 20 MAR 07 | | | | | | | | | | | | | | | | | | | | | | | | | | | | | | | | | | | | | | | | | | | | | | | | | | | | |
| D | SEE SHT 1 FOR REV CHANGE | RJS | 19 SEPT 06 | | | | | | | | | | | | | | | | | | | | | | | | | | | | | | | | | | | | | | | | | | | | | | | | | | | | |
| C | REDREW | RJS | 3 JULY 06 | | | | | | | | | | | | | | | | | | | | | | | | | | | | | | | | | | | | | | | | | | | | | | | | | | | | |
| B | CHG'D WIRING OF K2 | RJS | 17 DEC 05 | | | | | | | | | | | | | | | | | | | | | | | | | | | | | | | | | | | | | | | | | | | | | | | | | | | | |
| A | REF PAGE 1 REV NOTES | RJS | 27 OCT 05 | | | | | | | | | | | | | | | | | | | | | | | | | | | | | | | | | | | | | | | | | | | | | | | | | | | | |
| REV | DESCRIPTION OF REVISION | BY | DATE | | | | | | | | | | | | | | | | | | | | | | | | | | | | | | | | | | | | | | | | | | | | | | | | | | | | |
| UNLESS OTHERWISE NOTED | ALL DIMENSIONS ARE IN INCHES | | | | | | | | | | | | | | | | | | | | | | | | | | | | | | | | | | | | | | | | | | | | | | | | | | | | | | |
| APPLY MACHINING TOLERANCES | 3/16" = ± 0.010" | | | | | | | | | | | | | | | | | | | | | | | | | | | | | | | | | | | | | | | | | | | | | | | | | | | | | | |
| 1/4" = ± 0.015" | 3/8" = ± 0.010" | | | | | | | | | | | | | | | | | | | | | | | | | | | | | | | | | | | | | | | | | | | | | | | | | | | | | | |
| 1/2" = ± 0.015" | 3/4" = ± 0.010" | | | | | | | | | | | | | | | | | | | | | | | | | | | | | | | | | | | | | | | | | | | | | | | | | | | | | | |
| 1" = ± 0.015" | 2" = ± 0.010" | | | | | | | | | | | | | | | | | | | | | | | | | | | | | | | | | | | | | | | | | | | | | | | | | | | | | | |
| DWG SCALE: | N/A | DRAWN BY: | RJS | DATE: | 06_OCT_2005 | | | | | | | | | | | | | | | | | | | | | | | | | | | | | | | | | | | | | | | | | | | | | | | | | | |
| PLOT SCALE: | N/A | APPD BY: | --- | DATE: | --- | | | | | | | | | | | | | | | | | | | | | | | | | | | | | | | | | | | | | | | | | | | | | | | | | | |
| DESCRIPTION: | ENGINE_SCHEMATIC | | | | | | | | | | | | | | | | | | | | | | | | | | | | | | | | | | | | | | | | | | | | | | | | | | | | | | |
| REFERENCE: | FIREPUMP | | | | | | | | | | | | | | | | | | | | | | | | | | | | | | | | | | | | | | | | | | | | | | | | | | | | | | |
| DRAWING NUMBER: | 10423E_SHT3 | | | | | | | | | | | | | | | | | | | | | | | | | | | | | | | | | | | | | | | | | | | | | | | | | | | | | | |

After 16 April 2010

CONTROL PANEL ENCLOSURE

- LEGEND:**
- OSS = OVER SPEED SWITCH
 - CTS = CRANK TERMINATION SWITCH
 - MBC1 = MAIN BATTERY CONTACTOR 1
 - MBC2 = MAIN BATTERY CONTACTOR 2
 - LCT = LOW COOLANT TEMPERATURE
 - HCT = HIGH COOLANT TEMPERATURE
 - LOP = LOW OIL PRESSURE
 - FSO = FUEL SHUT OFF
 - RWS = RAW WATER SOLENOID
 - VSP = VARIABLE SPEED PRESURE
 - DOP PRE = DIFFERENTIAL OIL PRESSURE PRE
 - DOP POST = DIFFERENTIAL OIL PRESSURE POST
 - OPS = OIL PRESSURE SENDER
 - WTS = WATER TEMPERATURE SENDER
 - MPU = MAGNETIC PICK-UP
 - RWHIT = RAW WATER HIGH INLET TEMP
 - CRWCLS = CLOGGED RAW WATER COOLING LOOP STRAINER
 - CLP PRE = COOLING LOOP PRESSURE PRE STRAINER
 - CLP POST = COOLING LOOP PRESSURE POST STRAINER
 - RWTS = RAW WATER TEMPERATURE SENDER



This document contains confidential and trade secret information, is the property of Cummins Fire Power LLC and is given to the receiver in confidence. The receiver, by receiving and retaining of the document accepts the document in confidence and agrees that, except as authorized in writing by Cummins Fire Power, it will (1) not use the document or any copy thereof or the confidential or trade secret information therein, (2) not copy the document, (3) not disclose to others either the document or the confidential or trade secret information therein, and (4) upon completion of the need to retain the document, or upon demand, return the document, all copies thereof, and all material copied therefrom. COPYRIGHT Cummins Fire Power, LLC

| | | |
|--|--|--|
| | CUMMINS FIRE POWER LLC CORPORATE OFFICE 1600 BUERKLE ROAD WHITE BEAR LAKE, MN WWW.CUMMINSFIREPOWER.COM | CUSTOM DESIGN AND UPFIT CENTER 875 LAWRENCE DRIVE DEPERE, WISCONSIN |
| | SCHEMATIC, MECHANICAL FIRE PUMP DRIVERS CFP MODELS: 33, 39, 59, 83 | |

| | | | | | | | |
|--|----------|----------------------------|------------------------|--------------|------------|-------------------|-------------------|
| UNLESS OTHERWISE SPECIFIED ALL DIMENSION TOLERANCES ARE: | | ANGULAR DIMENSIONS ± 1° | IMPERIAL UNITS | METRIC UNITS | DWG UNITS: | DRAWN BY: KAK | DATE: 14 DEC 2009 |
| B | 2014-107 | ADDED COOLING LOOP SENSORS | THIRD ANGLE PROJECTION | INCH/LB/S | SCALE: | AUTO CAD | REF DRWG: |
| A | 2011-189 | ADDED RS485 WIRES. | | EST WEIGHT: | SHEET 10F1 | DRAWING NO: 16122 | |
| REV | ENF | DESCRIPTION OF REVISION | BY | DATE | | | |