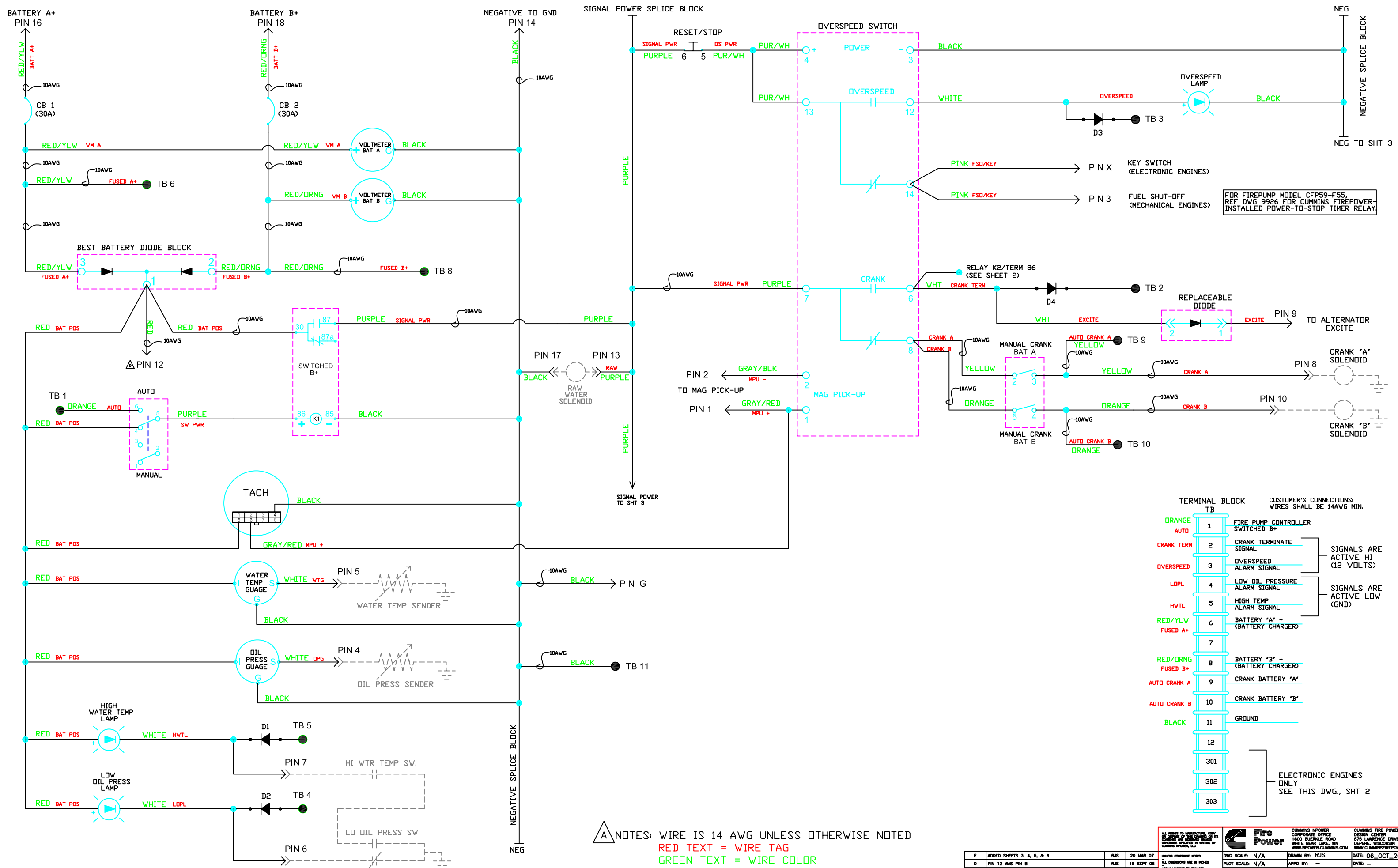


Before 16 April 2010



FOR FIREPUMP MODEL CFP59-F55,
REF DWG 9926 FOR CUMMINS FIREPOWER-
INSTALLED POWER-TO-STOP TIMER RELAY

TERMINAL BLOCK TB	CUSTOMER'S CONNECTIONS Wires shall be 14AWG MIN.
ORANGE AUTO	1 FIRE PUMP CONTROLLER SWITCHED B+
CRANK TERM	2 CRANK TERMINATE SIGNAL
OVERSPEED	3 OVERSPEED ALARM SIGNAL
LOPL	4 LOW OIL PRESSURE ALARM SIGNAL
HVTL	5 HIGH TEMP ALARM SIGNAL
RED/YLW FUSED A+	6 BATTERY 'A' + (BATTERY CHARGER)
7	
RED/DRNG FUSED B+	8 BATTERY 'B' + (BATTERY CHARGER)
AUTO CRANK A	9 CRANK BATTERY 'A'
AUTO CRANK B	10 CRANK BATTERY 'B'
BLACK	11 GROUND
301	
302	
303	

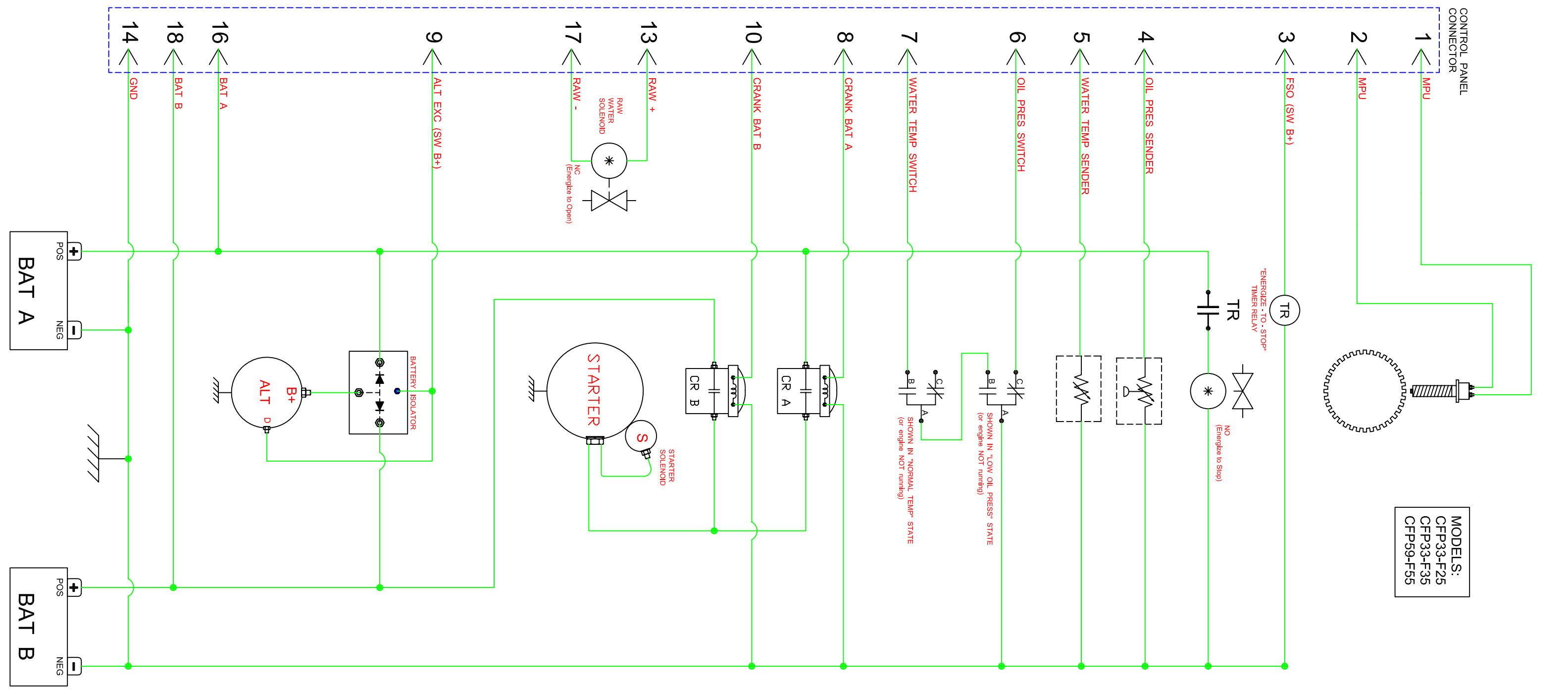
SIGNALS ARE ACTIVE HI (12 VOLTS)
SIGNALS ARE ACTIVE LOW (GND)

ELECTRONIC ENGINES ONLY
SEE THIS DWG., SHT 2

NOTES: WIRE IS 14 AWG UNLESS OTHERWISE NOTED
 RED TEXT = WIRE TAG
 GREEN TEXT = WIRE COLOR
 WIRE COLOR IS WHITE UNLESS OTHERWISE NOTED
 D1 - D4: 6 Amp/400 Vpiv

REV	DESCRIPTION OF REVISION	BY	DATE
E	ADDED SHEETS 3, 4, 5, & 6	RJS	20 MAR 07
D	PIN 12 WAS PIN 8	RJS	19 SEPT 06
C	REMOVED 5 AMP CIRCUIT BREAKER	RJS	27 JUNE 06
B	ADDED CONNECTION TO TERM 6 OF SPEED SWITCH	RJS	17 DEC 05
A	CHANGED WIRE GAUGES; CHG'D TB 1 LABELS	RJS	27OCT05

<small>ALL RIGHTS TO MANUFACTURE, COPY OR REPRODUCE THIS DRAWING OR ITS CONTENTS ARE RESERVED EXCEPT AS INDICATED BY CUMMINS INC. OR CUMMINS FIREPOWER, LLC</small>		CUMMINS FIREPOWER CORPORATE OFFICE 1800 BIERKLE ROAD WHITE BEAR LAKE, MN WWW.CUMMINSFIREPOWER.COM	CUMMINS FIRE POWER DESIGN CENTER 875 LAWRENCE DRIVE DEPERE, WISCONSIN WWW.CUMMINSFIREPOWER.COM
<small>UNLESS OTHERWISE NOTED ALL DIMENSIONS ARE IN INCHES DIMENSIONS IN PARENTHESES ARE IN MILLIMETERS 1/16" = 1.5875 mm 3/32" = 2.3812 mm 1/8" = 3.1750 mm 3/16" = 4.7625 mm 1/4" = 6.3500 mm 5/16" = 7.9375 mm 3/8" = 9.5250 mm 1/2" = 12.7000 mm 5/8" = 15.8750 mm 3/4" = 19.0500 mm 7/8" = 22.2250 mm 1" = 25.4000 mm</small>	DWG SCALE: N/A PLOT SCALE: N/A DESCRIPTION: SCHEMATIC_CONTROL_PANEL REFERENCE: FIREPUMP	DRAWN BY: RJS APP'D BY: -- DATE: 06_OCT_2005 DATE: --	DRAWING NUMBER: 10423E_SHT1



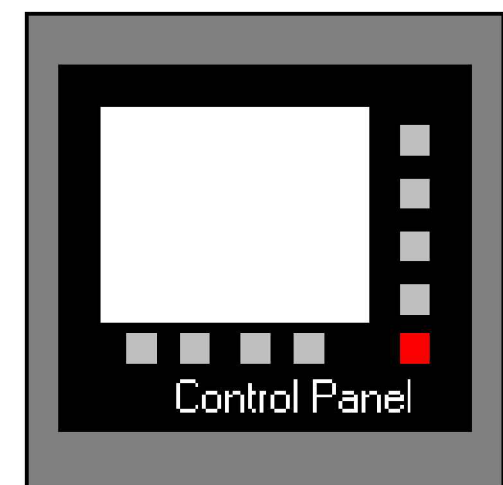
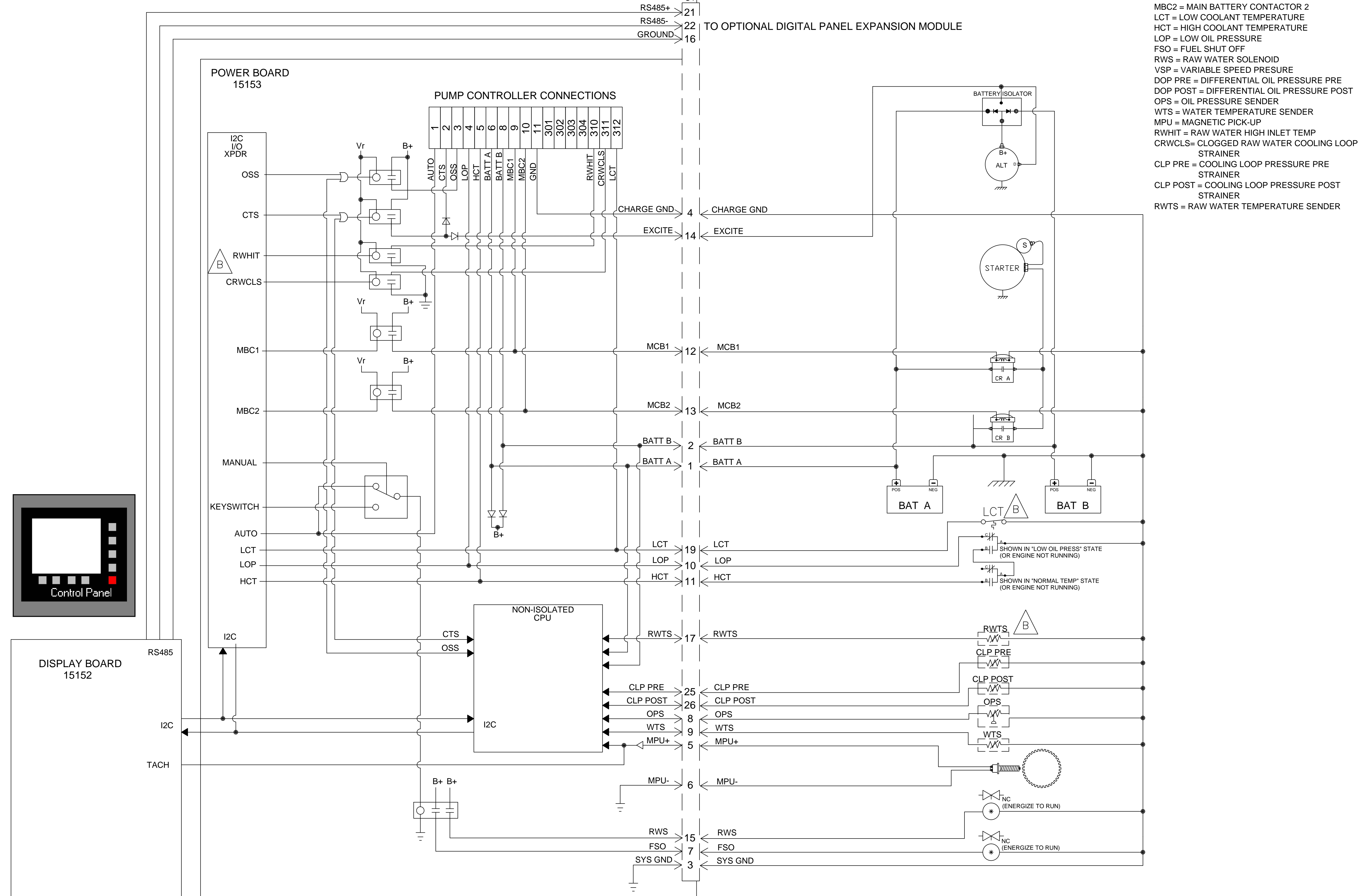
MODELS:
CFP33-F25
CFP33-F35
CFP59-F55

<small>ALL RIGHTS TO MANUFACTURE, COPY OR REPRODUCE THIS DRAWING OR ITS CONTENTS OR ANY PART THEREOF ARE RESERVED BY CLUMMINS NPOWER, LLC</small>		Fire Power <small>CLUMMINS NPOWER CORPORATE OFFICE 1800 BIERKLE ROAD WHITE BEAR LAKE, MN WWW.NPOWER.CLUMMINS.COM</small>		<small>CLUMMINS FIRE POWER DESIGN CENTER 878 LAWRENCE DRIVE DEPERE, WISCONSIN WWW.CLUMMINSFIREPOWER.COM</small>																																																											
<table border="1"> <tr><td>E</td><td>ADDED SHEETS 3, 4, 5, & 6</td><td>RJS</td><td>20 MAR 07</td></tr> <tr><td>D</td><td>SEE SHT 1 FOR REV CHANGE</td><td>RJS</td><td>19 SEPT 06</td></tr> <tr><td>C</td><td>REDREW</td><td>RJS</td><td>3 JULY 06</td></tr> <tr><td>B</td><td>CHG'D WIRING OF K2</td><td>RJS</td><td>17 DEC 05</td></tr> <tr><td>A</td><td>REF PAGE 1 REV NOTES</td><td>RJS</td><td>27 OCT 05</td></tr> <tr><td>REV</td><td>DESCRIPTION OF REVISION</td><td>BY</td><td>DATE</td></tr> </table>	E	ADDED SHEETS 3, 4, 5, & 6	RJS	20 MAR 07	D	SEE SHT 1 FOR REV CHANGE	RJS	19 SEPT 06	C	REDREW	RJS	3 JULY 06	B	CHG'D WIRING OF K2	RJS	17 DEC 05	A	REF PAGE 1 REV NOTES	RJS	27 OCT 05	REV	DESCRIPTION OF REVISION	BY	DATE	<table border="1"> <tr><td>UNLESS OTHERWISE NOTED</td><td>ALL DIMENSIONS ARE IN INCHES</td></tr> <tr><td>APPLY WELDING TOLERANCES</td><td></td></tr> <tr><td>3X = 0.005</td><td></td></tr> <tr><td>2X = 0.010</td><td></td></tr> <tr><td>1X = 0.015</td><td></td></tr> <tr><td>APPLY MILD TOLERANCES</td><td></td></tr> <tr><td>3X = 0.010</td><td></td></tr> <tr><td>2X = 0.015</td><td></td></tr> <tr><td>1X = 0.020</td><td></td></tr> </table>	UNLESS OTHERWISE NOTED	ALL DIMENSIONS ARE IN INCHES	APPLY WELDING TOLERANCES		3X = 0.005		2X = 0.010		1X = 0.015		APPLY MILD TOLERANCES		3X = 0.010		2X = 0.015		1X = 0.020		<table border="1"> <tr><td>DWG SCALE:</td><td>N/A</td><td>APPD BY:</td><td>RJS</td><td>DATE:</td><td>06_OCT_2005</td></tr> <tr><td>PLOT SCALE:</td><td>N/A</td><td>APPD BY:</td><td>---</td><td>DATE:</td><td>---</td></tr> </table>	DWG SCALE:	N/A	APPD BY:	RJS	DATE:	06_OCT_2005	PLOT SCALE:	N/A	APPD BY:	---	DATE:	---	<table border="1"> <tr><td>DESCRIPTION:</td><td>ENGINE_SCHEMATIC</td></tr> <tr><td>REFERENCE:</td><td>FIREPUMP</td></tr> <tr><td>DRAWING NUMBER:</td><td>10423E_SHT5</td></tr> </table>	DESCRIPTION:	ENGINE_SCHEMATIC	REFERENCE:	FIREPUMP	DRAWING NUMBER:	10423E_SHT5
E	ADDED SHEETS 3, 4, 5, & 6	RJS	20 MAR 07																																																												
D	SEE SHT 1 FOR REV CHANGE	RJS	19 SEPT 06																																																												
C	REDREW	RJS	3 JULY 06																																																												
B	CHG'D WIRING OF K2	RJS	17 DEC 05																																																												
A	REF PAGE 1 REV NOTES	RJS	27 OCT 05																																																												
REV	DESCRIPTION OF REVISION	BY	DATE																																																												
UNLESS OTHERWISE NOTED	ALL DIMENSIONS ARE IN INCHES																																																														
APPLY WELDING TOLERANCES																																																															
3X = 0.005																																																															
2X = 0.010																																																															
1X = 0.015																																																															
APPLY MILD TOLERANCES																																																															
3X = 0.010																																																															
2X = 0.015																																																															
1X = 0.020																																																															
DWG SCALE:	N/A	APPD BY:	RJS	DATE:	06_OCT_2005																																																										
PLOT SCALE:	N/A	APPD BY:	---	DATE:	---																																																										
DESCRIPTION:	ENGINE_SCHEMATIC																																																														
REFERENCE:	FIREPUMP																																																														
DRAWING NUMBER:	10423E_SHT5																																																														

After 16 April 2010

CONTROL PANEL ENCLOSURE

- LEGEND:**
- OSS = OVER SPEED SWITCH
 - CTS = CRANK TERMINATION SWITCH
 - MBC1 = MAIN BATTERY CONTACTOR 1
 - MBC2 = MAIN BATTERY CONTACTOR 2
 - LCT = LOW COOLANT TEMPERATURE
 - HCT = HIGH COOLANT TEMPERATURE
 - LOP = LOW OIL PRESSURE
 - FSO = FUEL SHUT OFF
 - RWS = RAW WATER SOLENOID
 - VSP = VARIABLE SPEED PRESURE
 - DOP PRE = DIFFERENTIAL OIL PRESSURE PRE
 - DOP POST = DIFFERENTIAL OIL PRESSURE POST
 - OPS = OIL PRESSURE SENDER
 - WTS = WATER TEMPERATURE SENDER
 - MPU = MAGNETIC PICK-UP
 - RWHIT = RAW WATER HIGH INLET TEMP
 - CRWCLS = CLOGGED RAW WATER COOLING LOOP STRAINER
 - CLP PRE = COOLING LOOP PRESSURE PRE STRAINER
 - CLP POST = COOLING LOOP PRESSURE POST STRAINER
 - RWTS = RAW WATER TEMPERATURE SENDER



This document contains confidential and trade secret information, is the property of Cummins Fire Power LLC and is given to the receiver in confidence. The receiver, by receiving and retaining of the document accepts the document in confidence and agrees that, except as authorized in writing by Cummins Fire Power, it will (1) not use the document or any copy thereof or the confidential or trade secret information therein, (2) not copy the document, (3) not disclose to others either the document or the confidential or trade secret information therein, and (4) upon completion of the need to retain the document, or upon demand, return the document, all copies thereof, and all material copied therefrom. COPYRIGHT Cummins Fire Power, LLC

	CUMMINS FIRE POWER LLC CORPORATE OFFICE 1600 BUERKLE ROAD WHITE BEAR LAKE, MN WWW.CUMMINSFIREPOWER.COM	CUSTOM DESIGN AND UPFIT CENTER 875 LAWRENCE DRIVE DEPERE, WISCONSIN
	SCHEMATIC, MECHANICAL FIRE PUMP DRIVERS CFP MODELS: 33, 39, 59, 83	

UNLESS OTHERWISE SPECIFIED ALL DIMENSION TOLERANCES ARE:		ANGULAR DIMENSIONS ± 1°		IMPERIAL UNITS	METRIC UNITS
THIRD ANGLE PROJECTION		HOLE TOLERANCES .0015 + .0005 .0020 + .0005 .0025 + .0005 .0030 + .0005 .0035 + .0005 .0040 + .0005	HOLE TOLERANCES .0015 + .0005 .0020 + .0005 .0025 + .0005 .0030 + .0005 .0035 + .0005 .0040 + .0005	DWG UNITS: INCH/LB/S	DRAWN BY: KAK AUTO CAD
B 2014-107 A 2011-189 REV ENF	ADDED COOLING LOOP SENSORS ADDED RS485 WIRES. DESCRIPTION OF REVISION	RMJ 21FEB2014 PBS 15JUN2011 BY DATE	DATE	DATE: 14 DEC 2009 REF DRWG:	SHEET 10F1 DRAWING NO: 16122