

CUMMINS PROVIDES RELIABLE GAS POWER TO SUPPORT POWER PLANT'S ENERGY NEEDS

**WHERE:**

Dawei Division, Lower
Myanmar Country

SUPPLY:

8 x C2000N5CB, QSV91G,
lean burn gas generator sets

PURPOSE:

Provide continuous gas power
to the city and region of Dawei
in Southern Myanmar.



ONGOING GAS EXPERTISE TAKEN TO EXTREMES.

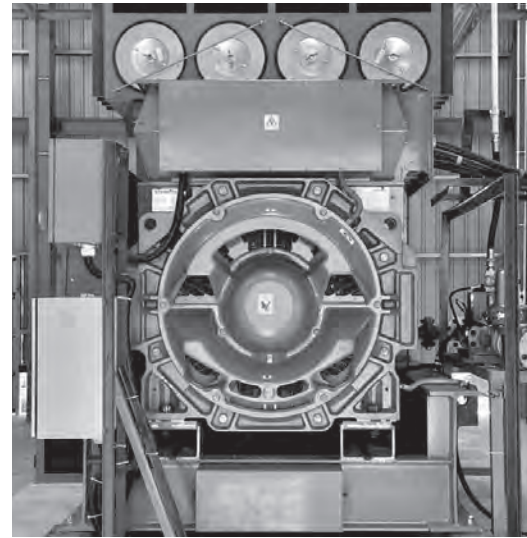
In November 2019, the Myanmar Government issued tender documents for a 16MW power plant to be installed in Dawei region in Southern Myanmar, to cover the power requirements of the Dawei City due to the lack of grid infrastructure. Petro & Trans power company were awarded the project and selected Cummins DKSH Myanmar (CDM), Cummins local distributor partner, to support with the development and execution of this power project.

Despite the tight project schedules and short lead times, CDM was able to supply eight Cummins 2000kW QSV91G lean burn gas generators within a very short timeframe as opposed to other competing generator manufacturers, which was one of the reasons CDM was selected for this project. In addition, CDM provided ongoing support throughout the duration of the project from the equipment deployment up until the installation phase which was another critical customer requirement.

The QSV91G generators' proven reliability, coupled with the best-in-class load acceptance and high electrical efficiency were some of the key reasons for choosing the QSV91G series to cover the power plant's energy requirements.

To complete the generators' installation, standard controls were embedded within each generator model to support with monitoring the generators' performance. Additionally, CDM provided support for the design, installation and commissioning of all Balance of Plant (BoP) items such as radiators, gas trains and exhaust silencers to ensure the gas generators maintain a reliable performance no matter the site's conditions.

The 16MW power plant was built in two phases with the plant build and installation phase starting in January 2020 and the first 8MW being installed within 5 months. The additional 8MW are scheduled for commissioning within 2020.





During the installation phase, the COVID-19 pandemic outburst in the area prevented having some additional technical support from overseas on site. Despite those challenges however, Cummins quickly adapted a remote support system which offered the customer ongoing engineering and technical expertise on a 24/7 basis. Through this quick response and the efficiency of this remote support methodology, the CDM team managed to successfully complete the testing, tuning, commissioning and synchronizing steps of the first project phase.

To ensure the successful completion of the project, CDM's technical support teams were present at the power plant throughout the installation phase and collaborated closely with other local Myanmar technical teams and the Cummins Asia Pacific technical experts to gain additional support when required.

“ Cummins delivered the products fast and the first phase of the project was executed within five months from the purchase order receipt to commissioning stage. The efficient execution of this project is another example of Cummins’ strong expertise in offering power plant solutions ”

Sanjay Wele
Cummins Business Manager-Gas



Cummins Inc.
Box 3005
Columbus, IN 47202-3005
U.S.A.

1-800-CUMMINS™ (1-800-286-6467)
cummins.com

Bulletin 5600714 Printed in U.K. 10/20
©2020 Cummins Inc.