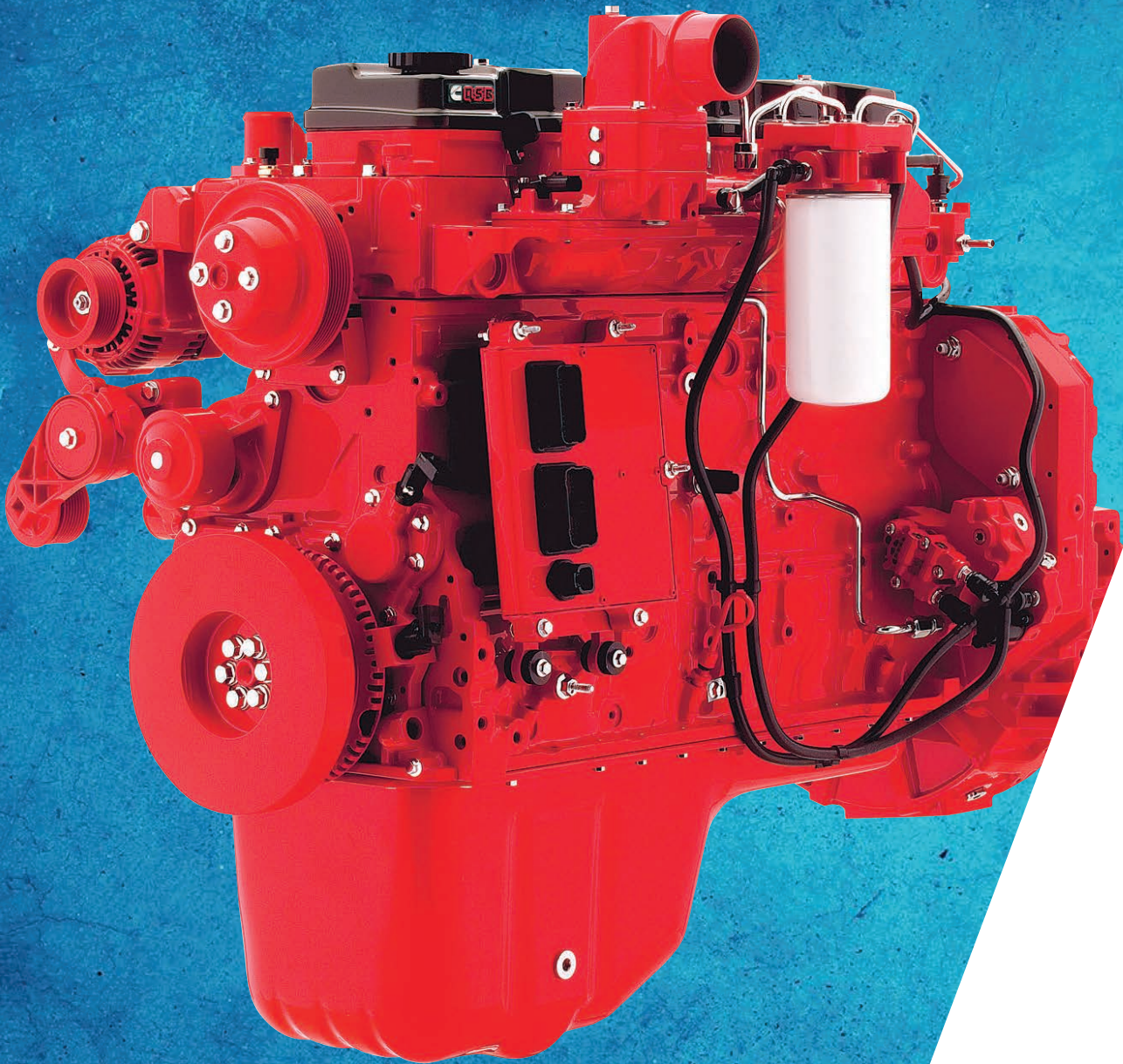


# QUANTUM SERIES

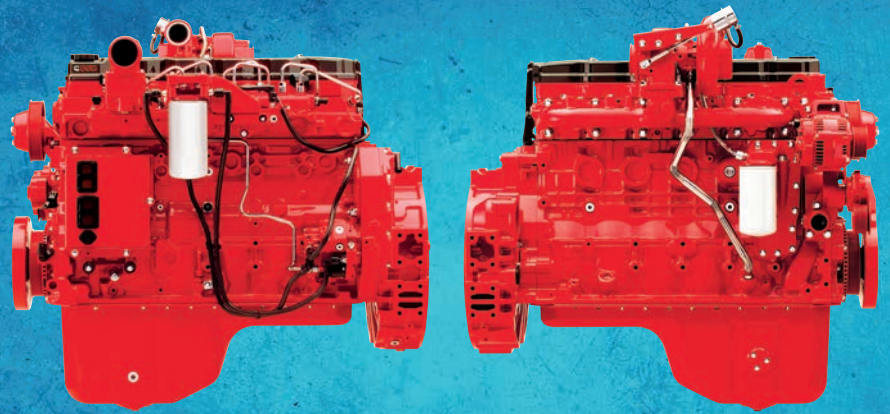
QSB6.7 TIER 3



**FOR  
A WORLD  
THAT'S  
ALWAYS ON™**

# DELIVERING MORE FOR LESS

The Tier 3/Stage IIIA QSB6.7 engine is one of the Quantum Series of engines from Cummins with innovative technology that delivers more for less.



The QSB6.7 is a compact, lightweight package with a high power density. One of Cummins B Series family of engines, it is trusted and proven in a wide range of industrial applications around the world. With high levels of power and torque it delivers operator benefits of productivity and fuel efficiency with low running costs.

**The QSB6.7 has been designed with features which include:**

- Tier 3/Stage IIIA emissions capability
- Increased durability and reliability
- Lower total life costs of ownership
- High power and torque

Designed to provide the operator superior value and reliability, while meeting stringent worldwide emissions standards.

- Meets Tier 3/Stage IIA emissions levels using in-cylinder combustion technology without the need for external components
- Compatible with high-sulfur fuels for worldwide use
- Uses proven major components for a long life to overhaul
- The simplicity of design delivers excellent reliability and ease of servicing
- Efficient fuel systems deliver low levels of fuel consumption

For equipment manufacturers, the QSB6.7 is designed to fit your machine. Cummins' Engineers will help define your specification for the best and most cost effective installation. The electronic calibration will then be tailored to the exact duty cycle and operation of the machine. This expertise drives the best solution for the OEM and the end user.

## FEATURES AND BENEFITS

**FULL-AUTHORITY ELECTRONIC CONTROLS** – Provide seamless integration with other components to optimize engine operation.

**CYLINDER BLOCK** – with a deep stiff crankcase for high power and torque, low noise and long engine life.

**HIGH-PRESSURE COMMON-RAIL FUEL SYSTEM** – Allows multiple injection events for cleaner, quieter operation with consistent performance at every rpm. Also improves cold-weather starting.

**CUMMINS WASTEGATED TURBOCHARGER** – Delivers maximum power and torque.

**PARENT BORE CYLINDER BLOCK** – Designed for reduced noise and increased durability.

**TWO-STAGE DUAL FUEL FILTRATION** – Provides a balanced level of particle separation to maximize fuel filter life and protect the vital fuel system components.

**IMPROVED PISTON DESIGN** – Symmetrical piston bowl combines with centered injectors to deliver optimal combustion.

**REAR GEAR TRAIN** – Significantly lowers noise output to meet worldwide noise emissions standards.

**DIRECTED PISTON COOLING** – Lower piston temperatures lead to longer life.

**WIDER CAMSHAFT LOBES AND LARGER TAPPET WEAR SURFACE** – Enhance durability and reliability.

## SPECIFICATIONS

<b>Engine type</b>	In-line, 6-cylinder
<b>Displacement</b>	408 CU inches, 6.7 liters
<b>Bore and stroke</b>	4.21 x 4.88 inches, 107 x 124mm
<b>Aspiration</b>	Turbocharged / charge air cooled
<b>Oil system capacity</b>	25.3 U.S. QT, 23.9 liters

## DIMENSIONS\*

<b>Length</b>	41.7 inches	1,059mm
<b>Width</b>	28.6 inches	725mm
<b>Height</b>	37.8 inches	960mm
<b>Wet weight</b>	1,047 lb	475 kg

\*Dependent on customer specific options.

## MAINTENANCE INTERVALS

<b>Engine oil</b>	Up to 500 hours
-------------------	-----------------

## RATINGS

<b>Power kW / HP</b>	<b>Peak Torque – N•m / lb-ft @ rpm</b>
295 / 220	775 / 1051 @ 1600
275 / 205	730 / 990 @ 1500
260 / 194	730 / 990 @ 1500
250 / 186	730 / 987 @ 1500
240 / 179	730 / 990 @ 1500
220 / 164	700 / 949 @ 1500
215 / 160	655 / 888 @ 1500
205 / 153	685 / 929 @ 1300
203 / 151	695 / 942 @ 1450
200 / 149	548 / 743 @ 1500
193 / 144	698 / 946 @ 1400
190 / 142	685 / 929 @ 1400
185 / 138	575 / 780 @ 1500
173 / 129	640 / 868 @ 1350
160 / 119	540 / 732 @ 1300
155 / 116	456 / 618 @ 1500
133 / 99	431 / 584 @ 1450

Additional ratings may be available; contact your distributor for more information.

## ANY CUSTOMER, ANY QUESTION, ANY CHANNEL, **ANY TIME.**

Cummins Care is not a typical call center. We are a solutions center helping to prevent issues, provide answers quickly and reimburse accurately. We are your connection to a whole new level of customer service, to support and deliver faster personal attention with rapid results. From the moment you engage Cummins Care, you will have access to a Cummins expert with specialized skill sets, experience and in-depth knowledge to take care of your needs.

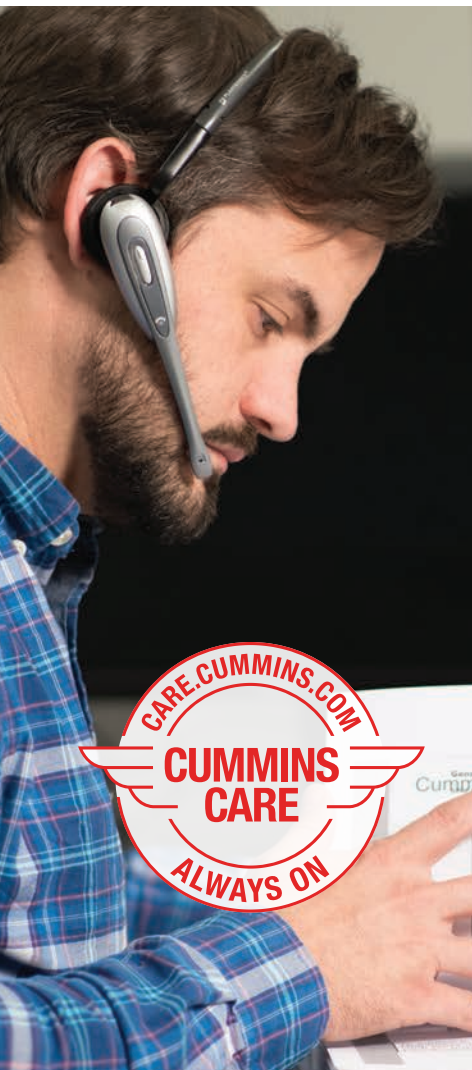
- **CUSTOMER SERVICE**
- **WARRANTY ASSISTANCE**
- **TECHNICAL SUPPORT**
- **CONNECTED SERVICE**

We are experts with advanced technology to make your life easier while providing a seamless support experience.

**Contact us at [care.cummins.com](http://care.cummins.com) or:**

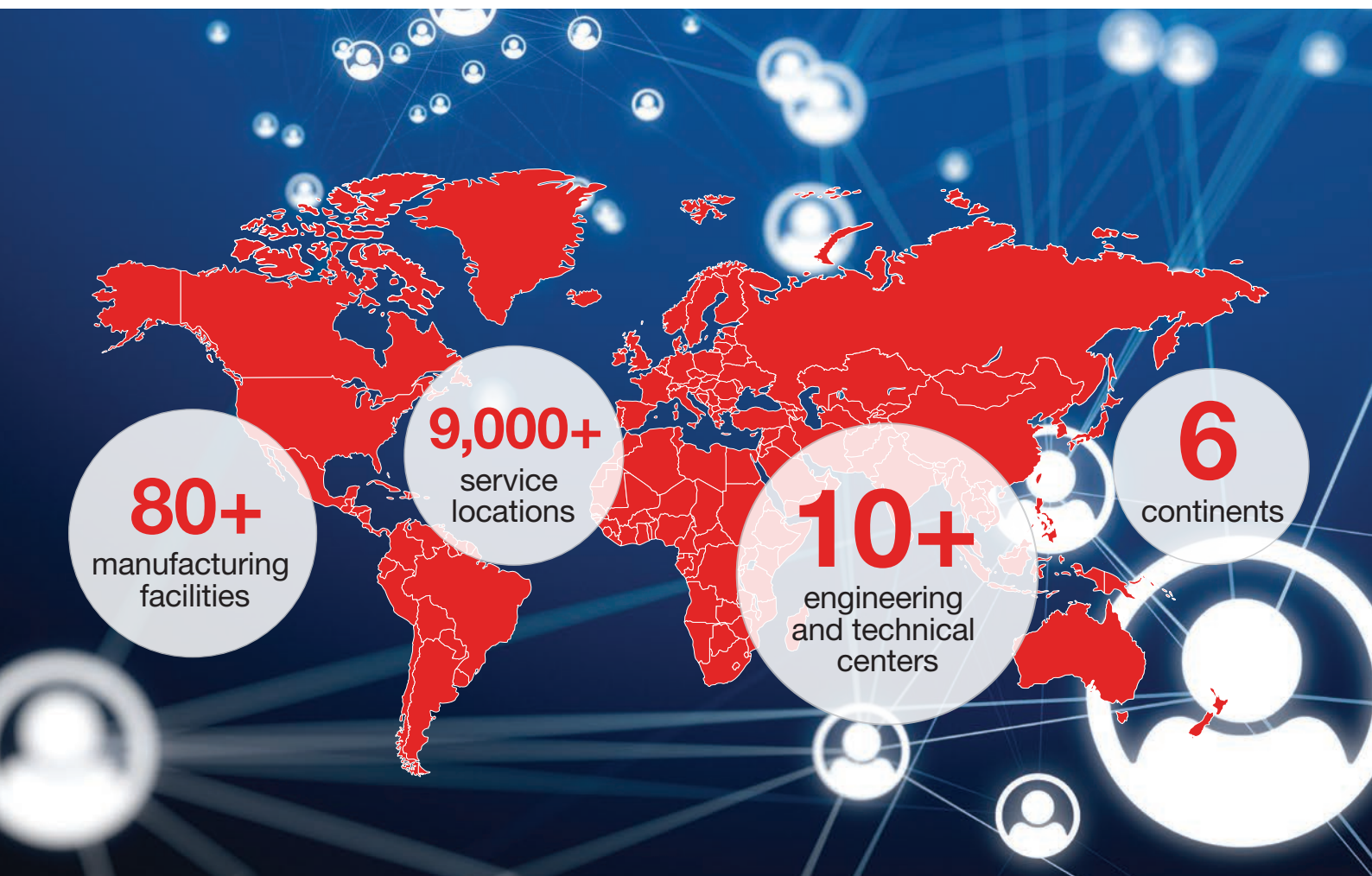
**Europe – 00 8000 286 6467**

**North America – 1-800-CUMMINS (1-800-286-6467)**



# GLOBAL SUPPORT NETWORK

CUMMINS' GLOBAL FOOTPRINT OF ENGINEERING, MANUFACTURING, AND SERVICE LOCATIONS MEANS WE ARE WHERE OUR CUSTOMERS NEED US TO BE.



TO FIND OUT MORE, CONTACT YOUR LOCAL DEALER OR DISTRIBUTOR VIA [CUMMINS.COM/LOCATOR](https://www.cummins.com/locator)



Cummins Inc.  
Box 3005  
Columbus, IN 47202-3005  
U.S.A.

[cummins.com](https://www.cummins.com)

Bulletin 6306593 Produced in U.K. 10/21  
©2021 Cummins Inc.