

# STRONG PERFORMANCE TO ANSWER THE CALL



## RS-35-185 REAR DRIVE AXLE

We have long understood that fire and rescue vehicles require components specifically designed for maximum performance. Our fire and rescue components are made to handle the speed requirements, stop-and-go, hard braking and road conditions unique to the application.

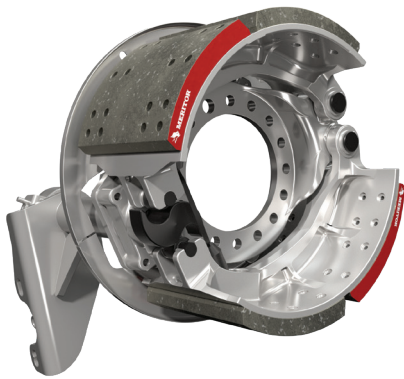
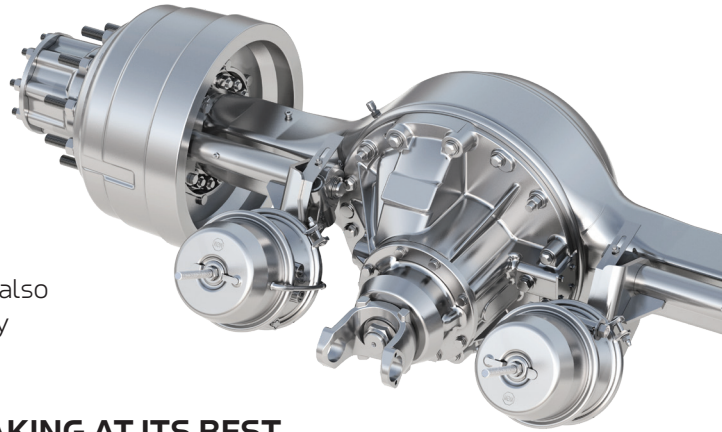
With the addition of the RS-35-185 single reduction rear drive axle, we have single rear axles for fire and rescue applications with gross axle weight ratings (GAWRs) of 23,000 to 35,000 pounds. The RS-35-185 axle is available with industry-leading Meritor® drum brakes and features driver-controlled differential lock (DCDL) availability.



# RS-35-185 REAR DRIVE AXLE

## THE AXLE THAT PERFORMS FOR FIRE AND RESCUE

The RS-35-185 single reduction rear drive axle is all about axle payload and strong performance. With a weight rating of 35,000 pounds and its stamped steel-fabricated axle housing, the RS-35-185 is built for the most demanding fire and rescue applications. In addition to its DCDL option, it offers standard wide-track housing, industry-familiar U-series wheel-ends and the proven RS-180 Series differential carrier. It also shares parts commonality and packaging envelope compatibility with the current RS-30-185 axle.



## FOUNDATION BRAKING AT ITS BEST

Cast+ cam brakes offer added durability and reliability with a single-piece, cast shoe and thick, extended-life brake linings that provide exceptional resistance to heat related wear in heavy-duty applications. Available in 16.5-inch x 6-inch or the larger 16.5-inch x 8.625-inch.

You can trust our heritage of braking performance in the fire and rescue industry ensures that it's engineered for performance in the most demanding work environments.

## REAR HYPOID SINGLE-REDUCTION AXLE SPECIFICATIONS\*

<b>Ratings</b>	35,000 lbs (15,876 kg)
<b>Axle model</b>	RS-35-185
<b>Standard ratios</b>	3.42, 3.58, 3.73, 4.30, 4.56, 4.89, 5.13, 5.38, 5.63, 5.86, 6.14, 6.83, 7.17, 7.83
<b>Ring gear sizes (pitch diameter)</b>	19.62 in (498 mm)
<b>Axle shaft spline size</b>	2.35 in (60 mm) – 46 Teeth
<b>Axle shaft diameter</b>	2.25 in (57 mm)
<b>Housing box size</b>	5.5 in x 5.5 in (140 mm x 140 mm)
<b>Wall thickness at spring seat</b>	0.56 in (14 mm) 0.63 in (16 mm) Wide track
<b>Wheel-end series</b>	U

\*Depending on application approval. Refer to publication TP-7824 for complete axle specification details.



Cummins Inc.  
Box 3005  
Columbus, IN 47202-3005  
U.S.A.

[cummins.com](http://cummins.com)

SP-1924  
Bulletin 6523909 Produced in U.S.A. Rev. 10/25  
©2025 Cummins Inc.